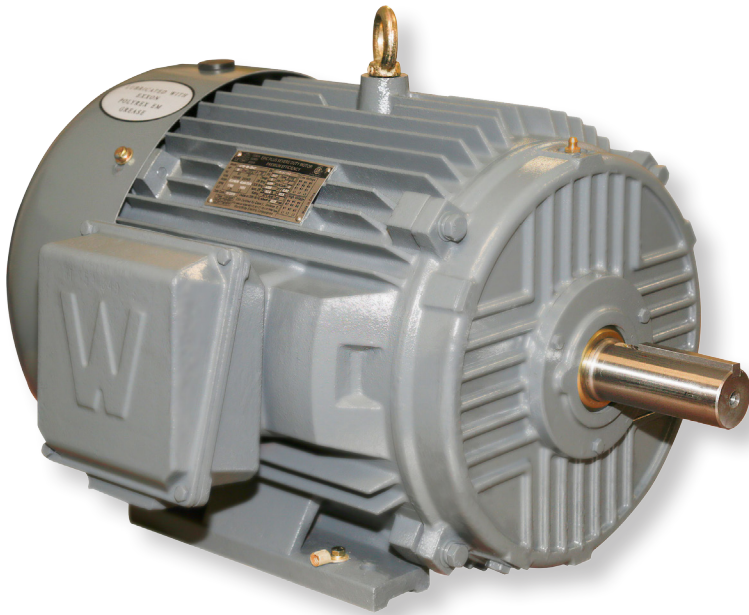




## PERFORMANCE MOTORS

### EPIC PLUS SEVERE DUTY

WorldWide Electric's EPIC Plus Severe Duty Motor is designed, built and certified for both general purpose applications such as pumps, fans, compressors, blowers and hydraulic power units as well as high torque applications such as crushers, hammermills and aggregate equipment.



#### + PROTECTION

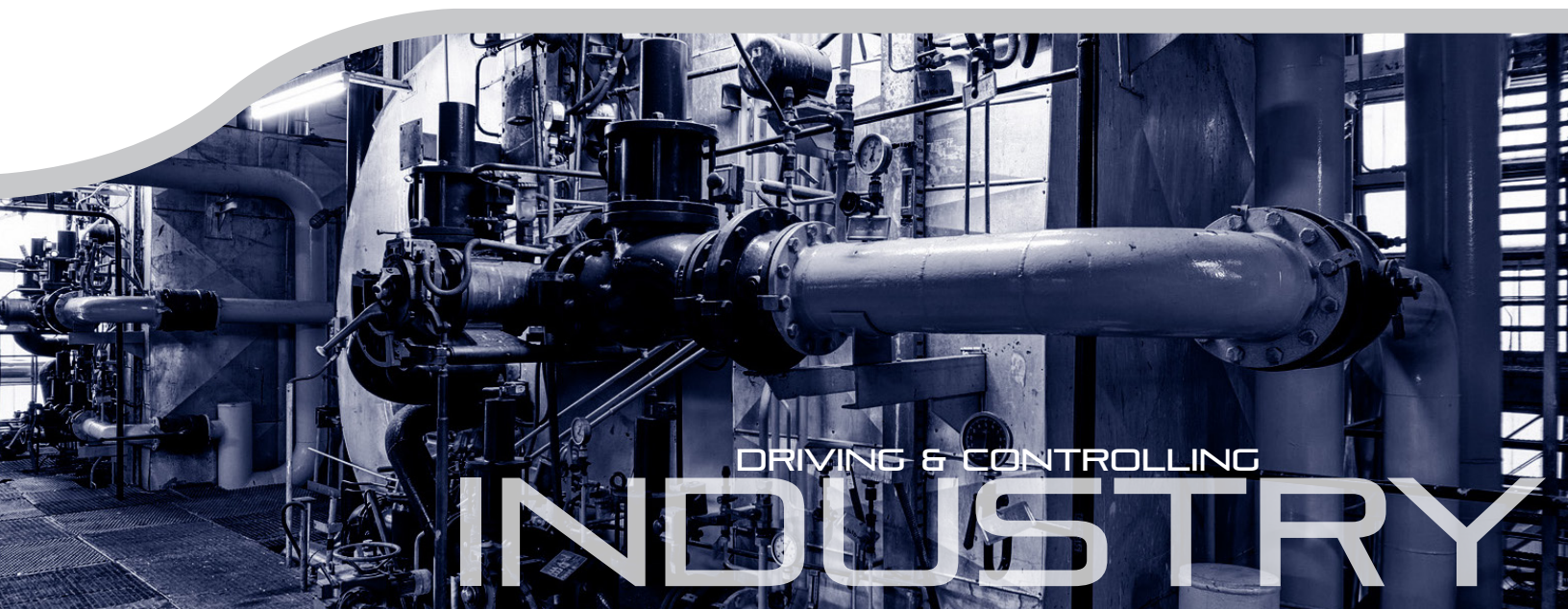
- TEFC enclosure - IP55 degree of protection
- CSA Certified for Class I, Division 2, Groups A, B, C, D
- Class F insulation
- Suitable for IEEE45 marine applications

#### + PERFORMANCE

- Premium efficiency, meets or exceeds EISA 2007 requirements
- 1.25 service factor
- Inverter duty, 10:1 CT / 20:1 VT
- Dual rated for 50/60 Hz

#### + RELIABILITY

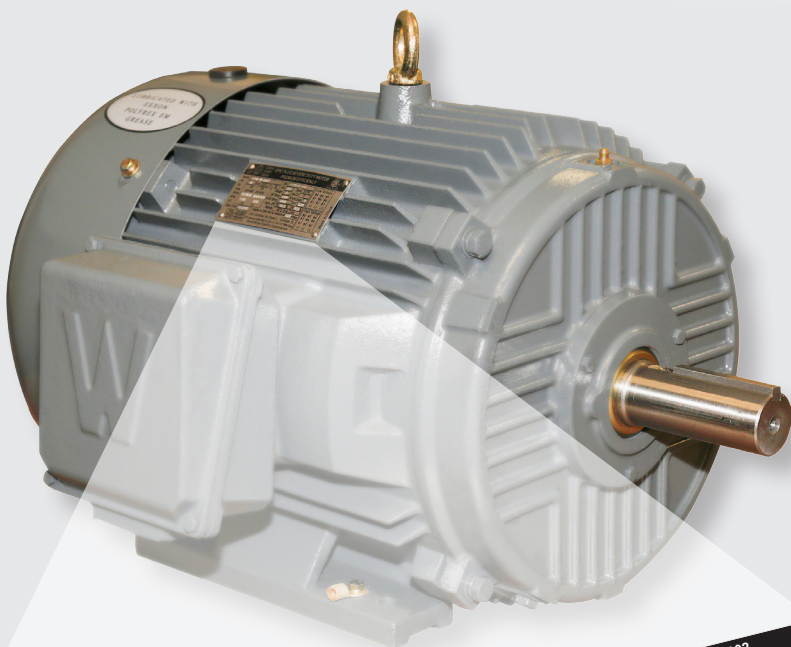
- Oversized bearings
- Metal clad V type sealing rings
- Spike resistant inverter grade magnet wire per NEMA MG1 Part 31



DRIVING & CONTROLLING

# INDUSTRY

**PERFORMANCE MOTORS**  
EPIC PLUS SEVERE DUTY



TECHNICAL SPECIFICATIONS ...

▪ **Features**

- TEFC severe duty cast iron enclosure
- Heavy gauge rolled steel fan cover
- Cast iron junction box
- IP55 degree of protection
- Metal clad V type sealing rings
- Heavy duty lifting lug on all frames
- Class F insulation, Class B temperature rise
- 40°C ambient, suitable for use in 55°C ambient with 1.0 service factor
- NEMA design B
- Inverter grade spike resistant magnet wire per NEMA MG1 Part 31
- Suitable for vertical shaft applications
- Oversized bearings
- Field modifiable for F2 (143T-447T frames)
- 3-year warranty

▪ **Ratings**

- Premium efficiency
- 1 HP - 200 HP
- 3600, 1800 and 1200 RPM
- 1.25 service factor (1.0 SF for 50 Hz applications)
- 230/460 volt, 60 Hz (143T-447T frames)
- 460 volt, 60 Hz (449T frame and above)
- Dual rated 50/60 Hz
- Inverter duty, 10:1 CT / 20:1 VT

▪ **Conformance**

- Built per NEMA MG1
- CSA Certified for Class I, Division 2, Groups A, B, C, D
- Conforms to CE requirements
- Suitable for IEEE45 marine applications
- DOE CC067A
- ISO9001

**CC067A EPIC PLUS SEVERE DUTY MOTOR**  
**PREMIUM EFFICIENCY**

WORLDWIDE Electric Corp. ISO9001 IEEE45

215302  
SA<sup>®</sup> US  
Energy Verified

Model	Encl	TEFC	IP	55	SN	Type	BTPE
HP	60	50			FR	Ins Cl	F
Hz	230/460	200/400			Design	KVACode	
Volts					DE Brng	P.F.	%
Amps					ODE Brng	FL	% 3/4
RPM					Nom. Eff	40°C Amb Cont	
S.F.	1.25	1.0			Rating	Amps	
Date Code	Usable on 208V 60 Hz network at						
	CSA Certified for Class I Division II ;						
	VFD rated per NEMA MG1-31.10:1 CT/20:1 VT PWM Type						
	WorldWide Electric Corporation						

Low Voltage  
6 4 5  
7 8 9  
12 10 11  
1 2 3  
L1 L2 L3

High Voltage  
4 5 6  
7 8 9  
12 10 11  
1 2 3  
L1 L2 L3

Made in CHINA

Frame 365-449FR  
Amb. 40°C T3B (180°C)  
Amb. 55°C T3 (200°C)

